

Log positions and register fishing operations

Mofi

is a mobile app for **tracking** and **registering** fishing operations, catches and bycatches. It serves as a **digital logbook** for fishers to record fishing activities for compliance purposes.

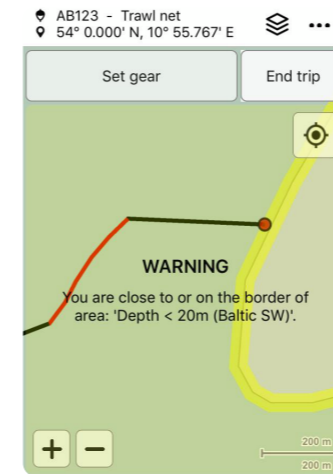
App Features

Flexibility of information to be collected per vessel is easily configurable .

Auto logging geographical location, course, speed, and gear activities.

Restricted area control warning when a vessel is too close to the border of a restricted area.

Near-real-time ping of vessel location data is updated on-shore every 15 minutes, enabling near-real-time monitoring.



The fisher is warned when a vessel is too close to the border of a restricted fishing area.


Fisher - Start trip, set gear, heave gear, end trip, log catch

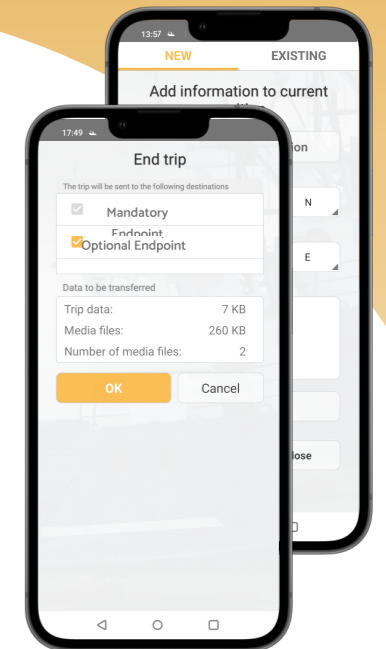
There are only four buttons to control the trip and gear activities. Fishers can fill in a form to register catch, bycatch and discard according to the configured compliance requirements.

Mofi integrates positional and fish log information to improve data accuracy, data traceability and to reduce the manual efforts required by the fishers.

 **Bluetooth trigger**

 **Data Analysis**

 **Offline Data Logging**



Data is transferred to and stored in the **Anchor Lab databases**, where a controller can **view** and **analyse** the fish log data using the **Black Box Analyzer** client.



17:31



Select species

Skates & rays

Register catch and endangered species with assisted and visual species selection



Recently used



Starry ray



Blonde ray



Cuckoo ray



Flapper skate



Anchor Lab
Copenhagen



Learn more about Mofi



<http://www.anchorlab.net>
info@anchorlab.net



Mofi

Mobile fisheries log



DOWNLOAD FOR IPHONE



DOWNLOAD FOR ANDROID